

SHALLCO SERIES 16 SWITCH

PART NO: 16A4-B-8

NO. OF SECTIONS: 8

INDEXING: 45°

CIRCUIT: A (SEE SCHEMATIC)

TYPE ACTION: NON-SHORTING

DETENT: STANDARD

STOPS INSTALLED: NO

TERMINALS: SCREW TYPE, HARDWARE SUPPLIED

PHENOLIC POINTER KNOB: SUPPLIED

MOUNTING HARDWARE: SUPPLIED

ELECTRICAL RATINGS:

15 A @ 125 VAC

5 A @ 250 VAC

3 A @ 600 VAC

5 A @ 30 VDC

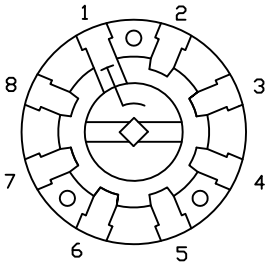
1 A @ 125 VDC



DIELECTRIC WITHSTANDING VOLTAGE: 1500 VRMS
 CONTACT RESISTANCE: 10 MILLIOHMS MAX. INITIAL
 INSULATION RESISTANCE: 1000 MEGOHMS, INITIAL

REVISIONS			
LTR	DESCRIPTION	DATE	APP'D

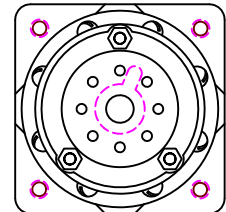
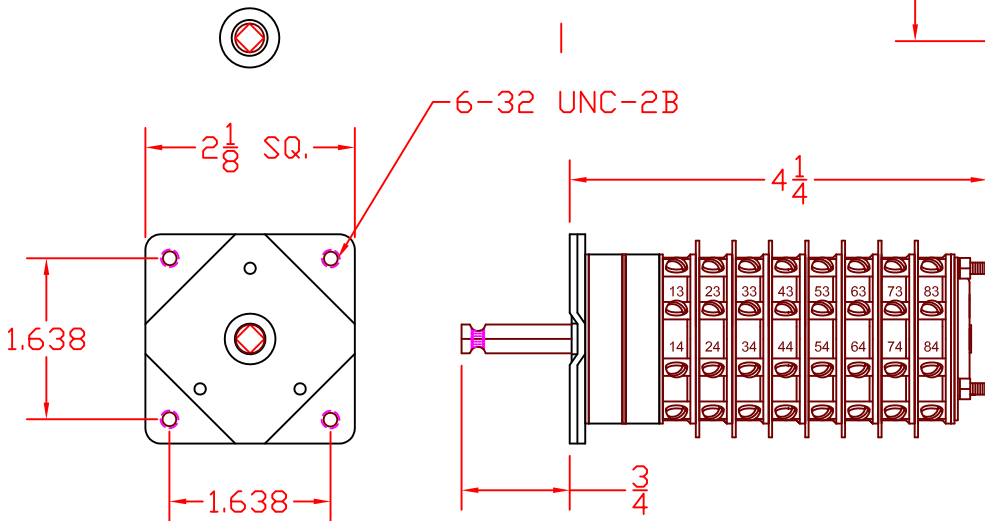
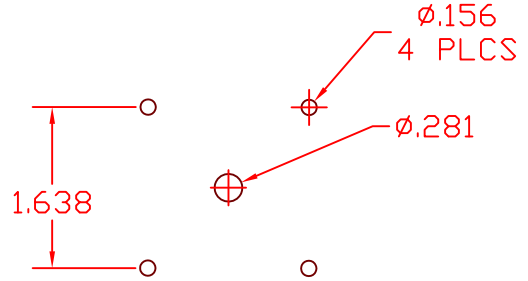
DECK	CONTACTS	POSITION							
		1	2	3	4	5	6	7	8
1	11		X						
	12			X					
	13				X				
	14					X			
	15						X		
	16							X	
	17								X
	18								
2	21		X						
	22			X					
	23				X				
	24					X			
	25						X		
	26							X	
	27								X
	28								
3	31		X						
	32			X					
	33				X				
	34					X			
	35						X		
	36							X	
	37								X
	38								
4	41		X						
	42			X					
	43				X				
	44					X			
	45						X		
	46							X	
	47								X
	48								
5	51		X						
	52			X					
	53				X				
	54					X			
	55						X		
	56							X	
	57								X
	58								
6	61		X						
	62			X					
	63				X				
	64					X			
	65						X		
	66							X	
	67								X
	68								
7	71		X						
	72			X					
	73				X				
	74					X			
	75						X		
	76							X	
	77								X
	78								
8	81		X						
	82			X					
	83				X				
	84					X			
	85						X		
	86							X	
	87								X
	88								



SCHEMATIC DIAGRAM

CIRCUIT "A"
 TYPICAL FOR ALL 8 DECKS

MOUNTING DIMENSIONS



DESCRIPTION

16A4-B-8

APPROVED P.DORMAN 5-23-05

SCALE: .5X

16A4-B-8

REV. -



308 COMPONENTS DRIVE
 SMITHFIELD, NC 27577 USA

SHEET 1 OF 1