

SHALCO SERIES 16 SWITCH

PART NO: 16A1-B-4

NO. OF SECTIONS: 4

INDEXING: 45°

CIRCUIT: A (SEE DIAGRAMS)

TYPE ACTION: NONSHORTING

DETENT: STANDARD

STOPS INSTALLED: NO

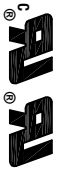
TERMINALS: SCREW TYPE, HARDWARE SUPPLIED

PHENOLIC POINTER KNOB: SUPPLIED

MOUNTING HARDWARE: SUPPLIED

ELECTRICAL RATINGS:

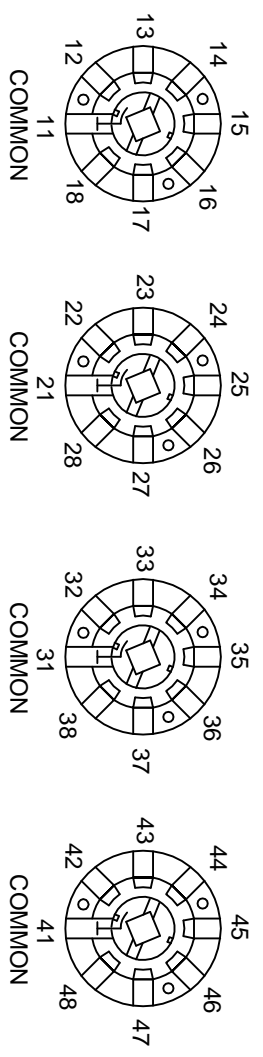
- 15 A @ 125 VAC
- 5 A @ 250 VAC
- 3 A @ 600 VAC
- 5 A @ 30 VDC
- 1 A @ 125 VDC



DIELECTRIC WITHSTANDING VOLTAGE: 1500 VRMS

CONTACT RESISTANCE: 10 MILLIOHMS MAX. INITIAL

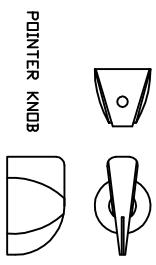
INSULATION RESISTANCE: 1000 MEGHOHMS, INITIAL



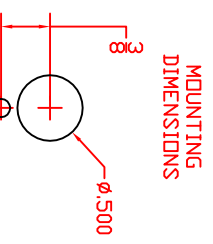
SCHEMATIC DIAGRAM

CIRCUIT "A"

COMMONS LOCATED AT TERMINALS 11, 21, 31 & 41 (SWITCH SHOWN IN THE "OFF" POSITION)

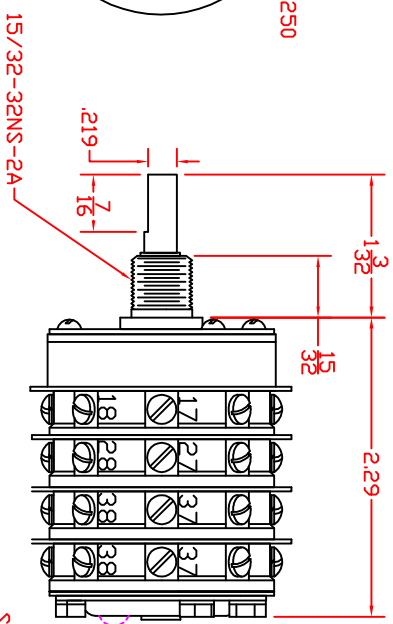
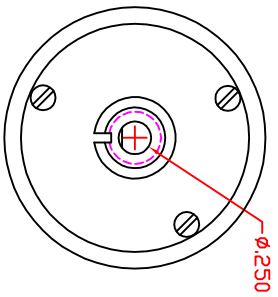


POINTER KNOB

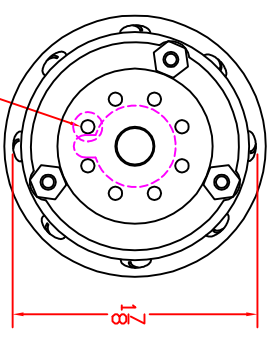


MOUNTING DIMENSIONS

DESCRIPTION	16A1-B-4
-------------	----------



STOP SCREW



DECK	CONTACTS	POSITION
		1 2 3 4 5 6 7 8
1	11	
	12	X
	13	
	14	X
	15	
	16	X
	17	
	18	X
2	21	
	22	X
	23	
	24	X
	25	
	26	X
	27	
	28	X
3	31	
	32	X
	33	
	34	X
	35	
	36	X
	37	
	38	X
4	41	
	42	X
	43	
	44	X
	45	
	46	X
	47	
	48	X