

SHALCO SERIES 16 SWITCH

PART NO: 16A1-B-3

NO. OF SECTIONS: 3

INDEXING: 45°

CIRCUIT: A (SEE SCHEMATIC)

TYPE ACTION: NONSHORTING

DETENT: STANDARD

STOPS INSTALLED: NO

TERMINALS: SCREW TYPE, HARDWARE SUPPLIED

PHENOLIC POINTER KNOB: SUPPLIED

MOUNTING HARDWARE: SUPPLIED

ELECTRICAL RATINGS:

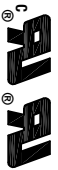
15 A @ 125 VAC

5 A @ 250 VAC

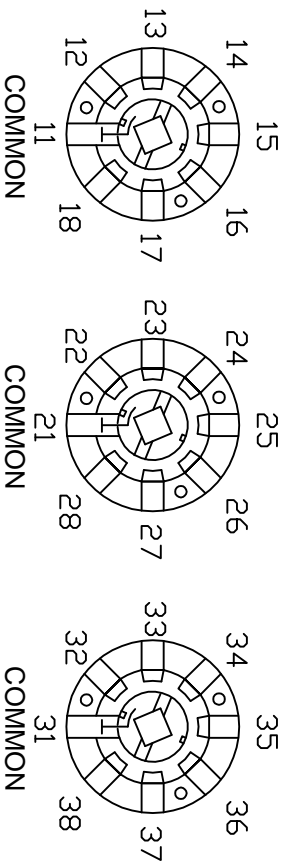
3 A @ 600 VAC

5 A @ 30 VDC

1 A @ 125 VDC



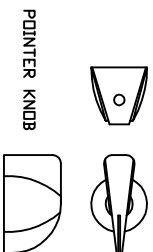
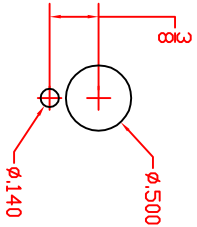
DIELECTRIC WITHSTANDING VOLTAGE: 1500 VRMS
 CONTACT RESISTANCE: 10 MILLIOHMS MAX. INITIAL
 INSULATION RESISTANCE: 1000 MEGOHMS, INITIAL



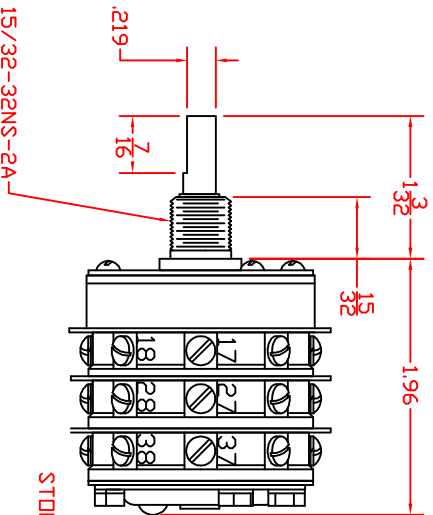
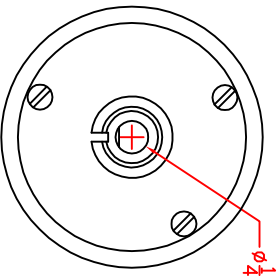
CIRCUIT "A"

COMMONS LOCATED AT TERMINALS 11 & 21 & 31
 (SWITCH SHOWN IN THE "OFF" POSITION)

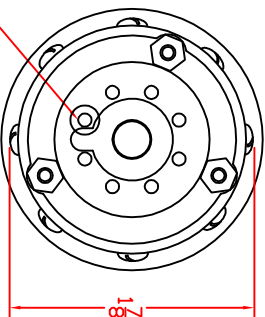
MOUNTING
 DIMENSIONS



POINTER KNDB



STOP SCREW



DECK	CONTACTS	POSITION
1	11	1 2 3 4 5 6 7 8
	12	
	13	
	14	
	15	
	16	
	17	
	18	
2	21	1 2 3 4 5 6 7 8
	22	
	23	
	24	
	25	
	26	
	27	
	28	
3	31	1 2 3 4 5 6 7 8
	32	
	33	
	34	
	35	
	36	
	37	
	38	

DESCRIPTION

16A1-B-3

REV. A



308 COMPONENTS DRIVE
 SMITHFIELD, NC 27577 USA